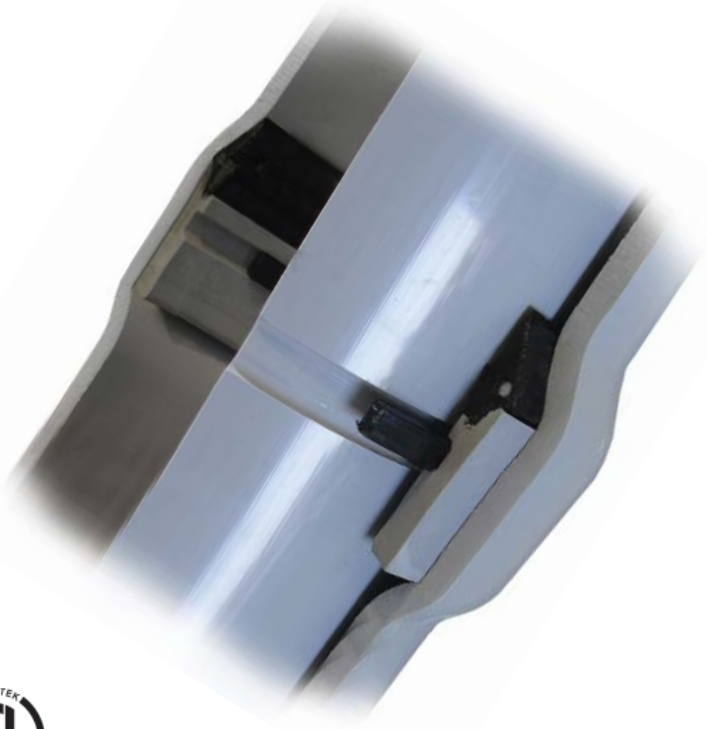


CAN▶LOC™

DIRECTIONAL BORING CONDUIT

CAN▶LOC is nonmetallic PVC Schedule 40 designed for directional drilling applications of up to 1,000 feet.

- 20' lengths
- Uses standard Schedule 40 Fittings
- No solvent cement needed for secure, water-proof joints
- Strong and flexible
- Easy assembly



Conforms to UL 651 and NEMA TC-2

Schedule 40 **CAN▶LOC**

Part Number	Trade Size	Length	Lay Length	Conduit O.D. (In.)	Conduit I.D. (In.)	Bell O.D. (In.)	Pack Qty.	Feet per Truckload	Wt. per 100 ft. (Lbs.)	Min. Bend Radius (ft.)	Insertion Force (Lbs.)	Seal Pressure Rating (psi)	Joined Pull Rating (Lbs.)	Typical Crush (Lbs. @ 30% deflection)	UL 651 / NEMA TC2 Min. Crush (Lbs)
A24EA42	4"	20'	19.5'	4.5"	4.0"	5.7"	520'	14,560'	234	65	70	75	12,000	1,075	900
A24GA42	6"	20'	19.5'	6.6"	6.0"	8.0"	400'	8,000'	456	65	80	75	18,000	950	850