

EZ BOX® ENT 1-Gang 16 cu. in. Switch or Outlet Box

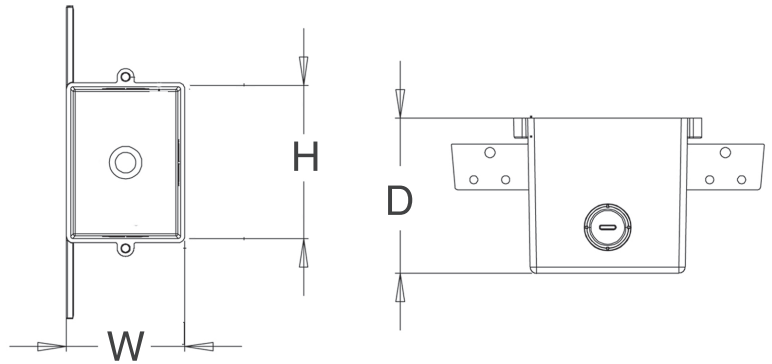


2 hour fire-rated



EN16SB is a 1-Gang, 16 cu. in., ENT switch or outlet box designed for use with electrical nonmetallic tubing (ENT) and standard electrical devices and switches in residential and light commercial applications. EN16SB features molded flanges and three 1/2 inch knockouts for EZ installation and multiple connections.

- Suitable for masonry walls
- Engineered for easy, cost saving installation and constructed with resilient PVC for durability
- ETL Listed, ETL 2 Hour Fire-rated
- Made in USA



Part Number	Carton Quantity	Height	Width	Depth
EN16SB	25	3.000	2.260	2.970

Dimensions are nominal



CANTEX ENT Line (Electrical Nonmetallic Tubing)

EZ Flex® Flexible ENT Electrical Nonmetallic Tubing is a high performance, low cost alternative to electrical metallic tubing. Since the corrugated design allows bending by hand, it eliminates the need for bending equipment and/or special tools, which reduces installation time dramatically.

Our EZ BOX® ENT Boxes are designed for use with our light, flexible and strong ENT Tubing. With specifically designed concentric knockouts, they are perfect for creating ENT electrical systems with ENT Tubing and ENT fittings. All our PVC ENT products are made of resilient non-conductive PVC that won't corrode or conduct electricity. They can be used with ENT snap-in fittings or standard Schedule 40 fittings.

CANTEX offers a complete line of ENT tubing, fittings and accessories to meet all of your electrical ENT needs. Since our ENT fittings & accessories connect seamlessly with our ENT tubing, they make it easy to convert entire electrical infrastructures through a single source—CANTEX.