

CANTEX® CAN>LOC®

DIRECTIONAL DRILLING CONDUIT

DONE RIGHT!



Conforms to UL 651
& NEMA TC-2

Simplify and Cut Costs for Trenchless Installations with CAN>LOC!

What's right about CAN>LOC? It simplifies and cuts labor costs for Horizontal Directional Drilling (HDD) projects while providing a quality, function and strength advantage over other HDD products. An innovative PVC conduit system for HDD applications up to 1,000 feet, CAN>LOC provides a secure, water tight seal without solvent, clamps or bolts. CAN>LOC also has stronger joint pull ratings than most other HDD systems, which gives it the extra strength and flexibility needed to protect HDD projects from bore failures and costly underground repairs.

BENEFITS:

- Easy installation
- Complete more bores per day!
- No clamps, bolts or solvent needed
- Secure waterproof joints without solvent
- Much stronger joint pull ratings than most HDD Conduit Systems
- Lighter for transport & easy job site handling
- Less product waste than HDPE
- Safe and efficient
- No reel removal hassles
- Less chance for error
- Uses standard schedule 40 fittings
- 20 foot lengths
- Made in America



CANTEX INC.
301 Commerce Street, Suite 2700
Fort Worth, Texas 76102-4127



www.cantexinc.com
info@cantexinc.com

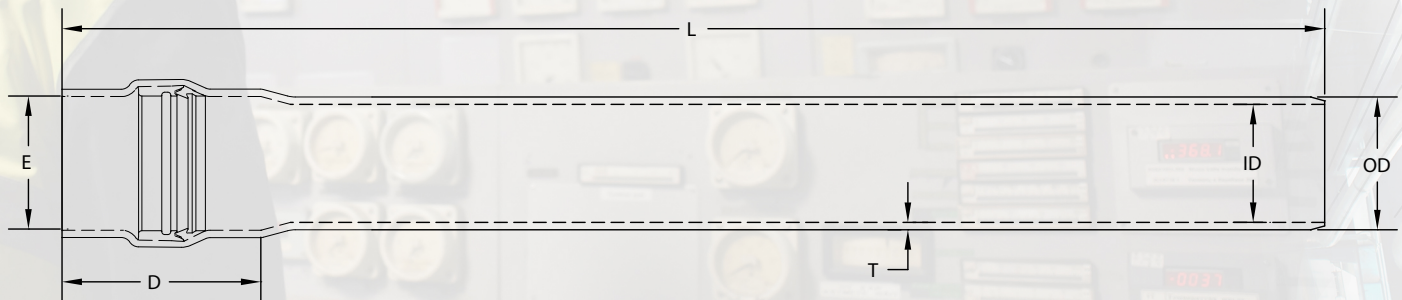
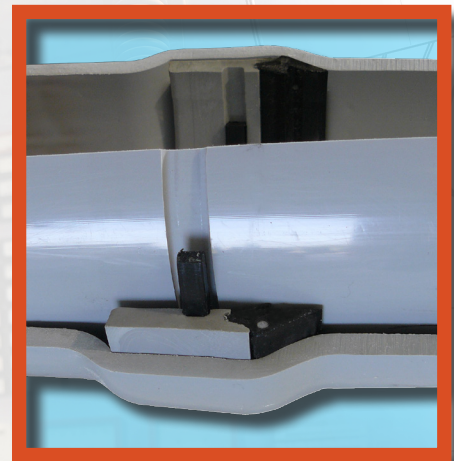


817.215.7000

CANLOC™ Horizontal Directional Drilling Conduit

Part Number	Trade Size	Length	Lay Length	Pack Qty.	Feet per Truckload	Wt. per 100 ft. (Lbs.)	Max. Bend Radius (ft.)	Insertion Force (Lbs.)	Seal Pressure Rating (psi)	Joined Pull Rating (Lbs.)	Typical Crush (Lbs. @ 30% deflection)	UL 651 / NEMA TC2 Min. Crush (Lbs)
A24EA42	4"	20'	19.5'	520'	14,560'	234	65	70	75	12,000	1,075	900
A24GA42	6"	20'	19.5'	400'	8,000'	456	65	80	75	18,000	950	850

- ETL Listed
- Conforms to UL-651
- Nema TC2 Compliant
- See NEC Article 352 & 300.5 for use
- Sunlight Resistant
- Max 90 degrees Celsius Wire
- Material is rigid PVC
- Spline lock and gasket are included



Part Number	Size	T Min.	OD	ID Min.	E	D Min.	L Min.
A24EA42	4"	0.237"	4.500"	3.961"	4.515"	6.00"	240"
A24GA42	6"	0.280"	6.625"	5.986"	6.658"	7.00"	240"

Dimensions are Nominal



CANTEX INC.
301 Commerce Street, Suite 2700
Fort Worth, Texas 76102-4127



www.cantexinc.com
info@cantexinc.com



817.215.7000